

**Extract of our scope of supply**  
**Control instruments for flow, pressure and level**



**Typ 31 d**  
**Flow switch**

Pipe diameter  
 Process connection  
 Flow direction  
 Nominal pressure  
 Operating temperature  
 Set point adjustable  
 Range  
 Accuracy  
 Wetted parts material  
 Contacts  
 Weather proof  
 Options

DN 15 to DN 150  
 threaded up to G2 or flanged  
 horizontal or vertical  
 PN 16 or 150 lbs up to PN 320  
 -60 up to +500 °C  
 ratio 1:8 e.g. 0.2-1,6 m/s  
 1 : 10, starting 20 l/h ( water )  
 +/- 2 % full scale  
 ss.4408, ss 1.4571 gun metal, cast steel  
 encapsulated reed, inductiv, pneumatic  
 Type 31d: IP 65; Type 31az: IP 54  
 - calibrated for viscosities >1,5 °E-  
 - explosionproof versions  
 - local indication / analog signal output



**Typ 107v**  
**Flow switch**

Pipe diameter  
 Process connection  
 Flow direction  
 Nominal pressure  
 Operating temperature  
 Indicating range  
 Setpoint adjustable  
 Accuracy  
 Wetted parts material  
 Weather proof  
 Contact  
 Options

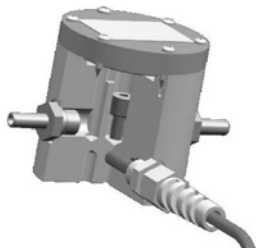
DN 10 up to DN 5000  
 threaded or flanged  
 horizontal or vertical  
 PN 16 or 150 lbs up to PN 320  
 -60 up to +550 °C  
 in the ratio 1 : 2,5 e.g.0.5- 1,5 m/s  
 in the ratio 1:2 , starting 0,3 m/s  
 +/- 2 % of adjustable setpoint  
 ss 1.4571 (AISI 316 Ti), PTFE, Hastelloy C4  
 IP 65  
 encapsulated reed, microswitch, inductiv, pneumatic  
 - approved model for power stations  
 - explosionproof versions  
 - local indication / analog signal output



**Typ 701**  
**Flow switch**

Pipe diameter  
 Process connection  
 Flow direction  
 Nominal pressure  
 Operating temperature  
 Set point adjustable  
 Wetted parts material  
 Contacts  
 Weather proof  
 Options

DN 15 up to DN 32 EARL Type 776, Type 778  
 DN 25 up to DN 65 EARL Type 720, Type 721  
 DN 50 and more EARL Type 700, Type 701  
 threaded ( Type 776, 778, 720) or flanged  
 horizontal or vertical  
 PN 16 or 150 lbs  
 -30 up to +350 °C  
 in the ratio 1 : 3, starting 0,25 m/s  
 C-steel, ss 1.4571, grey cast, brass  
 microswitch, inductive  
 IP 54  
 - intrinsically safe version  
 -local indication, Type 720az, 700az  
 - analog output Type 721afi, 701afi



**Typ 41 vS**  
**Flow switch**

Process connection  
 Flow direction  
 Operating pressure  
 Operating temperature  
 Setpoint  
 Min. setpoint gas  
 Min. setpoint liquid  
 Accuracy  
 Wetted parts material  
 Contacts  
 Options

G ¼  
 horizontal  
 max. 16 bar ( metal version )  
 max. 105 °C  
 fix  
 20 l/h related to air ( standard condition )  
 0,6 l/h related to water  
 +/- 2 % of adjustable setpoint  
 PVDF; ss 1.4571 (AISI 316 Ti)  
 encapsulated reed; inductive  
 - intrinsically safe version  
 - adjustable setpoint



**Typ 241**  
Differential pressure switch

Primary sensor  
Control range  
- EARL Type 246  
- EARL Type 244  
- EARL Type 241  
- EARL Type 241-B  
- EARL Type 188  
- EARL Type 188hv

Setpoint adjustable  
Accuracy

spring loaded diaphragm or bellows  
0,1 mbar – 0,9 bar positive pressure  
0,1 mbar – 0,9 bar negative pressure  
0,1 mbar – 2,5 bar differential pressure  
0,5-20 bar differential pressure  
1,0 bar – 15 bar positive pressure  
1.0 bar- 1600 bar positive pressure

in the ratio 1 : 3, max. 1 :10  
+/- 5 % from adjustable setpoint



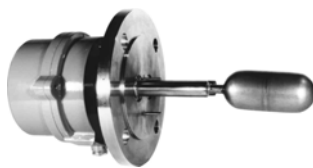
**Typ 188 Ex**  
Pressure switch

Material

Contacts  
Options

chamber: Al, Rg10, 1.4571, PTFE  
Parts: ss 1.4571 / 1.4310; Hastelloy C  
diaphragm: fabric viton covered

microswitch, encapsulated reed, inductive  
- low control – high max.pressure version  
- explosion proof version  
- unit for max temperature 200°C  
- local indication



**Typ 86**  
Level switch

Primary sensor  
EARL Typ 86  
EARL Typ 89  
Process connection  
Nominal pressure  
Operating temperature  
Contacts  
Wetted parts material  
Accuracy  
Options

float or spring sustained displacer  
mounting sideways to tank or chamber  
top mounted to tank or chamber  
threaded or flanged  
PN 16 or 150 lbs – PN 320  
-60 up to +500 °C  
encapsulated reed, inductive  
ss 1.4571,Hastelloy C, PVDF  
+/- 2 mm level difference  
- unit incorporated in chamber  
- explosion proof version  
- local indication  
- analog output signal

**Other versions and control instruments are available on request.**