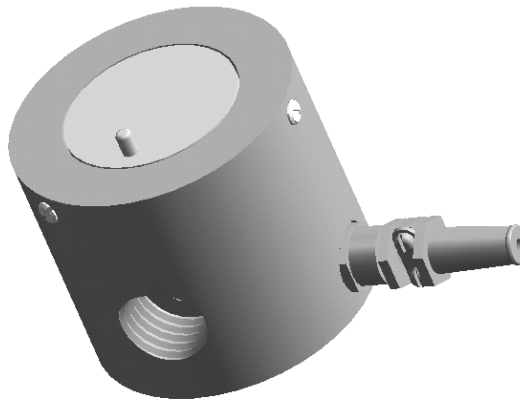


EARL Flow switch for low gas- or liquid flows type 41vS



Application

The unit has been developed for long-term operational use and controls liquid flows from 0.1 l/h or gas flows from 20 l/h referred to air with standard conditions. The unit is suitable for horizontal pipes with threaded process G 1/4. The set point is factory set.

Operation

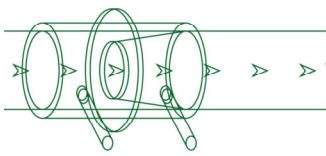
The flow directed upwards lifts a float. When decreasing the set point a permanent magnet contained in the float operates a reed contact. With normal flow the float is situated at the stop. The pressure loss is kept down by means of overflow tubing.

Advantages

- Control of small flow quantities.
- Suitable for pulsing flow from piston or diaphragm pumps.
- Differing material combinations for aggressive media.

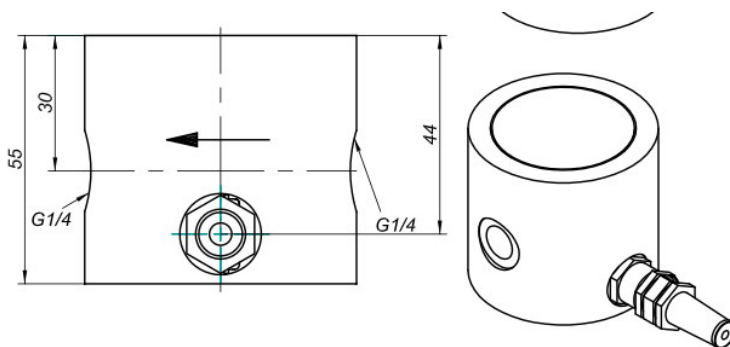
Suitability

- Control of gas odorization.
- Control of extraction.
- Leakage control.
- Overflow control.



Technical data (standard model)

<i>Installation position</i>	Horizontal
<i>Wetted parts</i>	Housing PVDF, float Corrosion and acid resistant stainless steel, material no. 1.4571 (similar to AISI 316Ti)
<i>Switch contact</i>	Plastics encapsulated reed contact, closing with falling flow Switching capacity: max. 300V/50 Hz, max. 0.5 A, max. 10W Resistance 0.2 Ω
<i>Set points</i>	Liquids: from 0.1 l/h Air with standard conditions: from 20 l/h;
<i>Cable</i>	5 m two- core litz, 22 AWG (0.324 mm ²) PVC isolated and covered with PVC, with litz ends
<i>Admissible deviation of actual set point</i>	+/- 5 % of required set point
<i>Repeatability of adjusted set point</i>	+/- 2 % of adjusted set point
<i>Hysteresis</i>	Between on and off switching 20 % of required set point
<i>Operating pressure</i>	Max. 16 bar
<i>Operating temperature</i>	Max. 105 °C
<i>Ambient air temperature</i>	-25 to +70 °C



Note

There is no maintenance required if the unit is used with clean liquids and gases. For slightly contaminated media a suitable filter has to be incorporated.